

Woolomin Public School

Newsletter Term 4, Week 3

Frederick Street, Woolomin, NSW, 2340

Phone: 6764 2274

Email: woolomin-p.school@det.nsw.edu.au

Website: www.woolomin-p.schools.nsw.edu.au



Monday, 29 October 2019

Week 2 Assembly Awards

Principal's Award

Joseph Sampson

For demonstrating determination to improve his handwriting to achieve his pen licence.



Mrs McMahon's Award

Maiya Douglas

For her focus when learning how to trade when completing 2 digit algorithms.



Miss Burford's Award

Emma Adams

For an incredible effort across all learning areas.



Miss Burford's Award

Laylah O'Malley

For showing kindness towards her peers.



Caught You Being Good Prize

Declan Scharkie



SRC Raffle

The giant SRC raffle coordinated by our students and Mrs Meredith is getting close to the big draw date!

Please sell or return any remaining tickets and return your books and money to the school office. Mrs Meredith has collected many amazing donations to make this a super raffle prize to win especially so close to Christmas.

DRAWN FRIDAY 1st NOVEMBER

Touch Gala Day

On Wednesday 30 October, selected students will be heading to the Gibbs Street Oval in Tamworth to participate in teams alongside fellow small school students at the NSW Touch Gala Day. Games will run for 15 minutes and each team will play a minimum of 4 games. The Gala Day is purely for fun and as such no scores will be kept.

CAPERS

On Monday 21 October, Miss Burford and our fourteen CAPERS students, travelled in to meet students from other small schools for the first mass dance rehearsal. It was a fantastic chance to see all the students put their dance moves together after practising at school over the past term. There will also be another rehearsal on Wednesday 6 November before the public performances on Friday and Saturday.

Cutlery

We have recently noticed with this term's salad bar that we are quickly running short on forks. If you have any old cutlery that you are no longer using and unsure what to do with, we would be happy to take them off your hands.

Kindergarten Orientation Program 2-School Readiness

Our Kindergarten Orientation Program 2 is to provide children who are turning 5 before 31st July 2020 and intend on commencing Kindergarten in 2020 the opportunity to become familiar with school routines. Children will spend time in the K-2 classroom learning the expectations of 'big school'.

Day: Tuesday Term 4 Weeks 5,6,7

Dates and Times:	12/11/19	9am-3.00pm
	19/11/19	9am-3.00pm
	26/11/19	9am-3.00pm

RSVP now by phoning the school to inform us that your child will be attending.

School Phone Number- 67642274

Please note when enrolling your child you will need to bring their birth certificate, immunisation details and any medical information / health care plans.

Questacon

The Shell Questacon Science Circus will be holding a Pop-Up Science Centre on Saturday 26 and Sunday 27 October at Tamworth Regional Entertainment and Conference Centre (TRECC). Visitors of all ages can enjoy over 40 interactive science exhibits and watch spectacular science shows as Science Circus presenters lie on a bed of nails and levitate beach balls. Come any time between 10am and 3pm. Tickets are only available at the door: adult \$6, child/concession \$5, family \$18 and children under 5 are free.

Mini Canteen

Salad bar will be available everyday Monday to Friday at 11.15am. Please place order each morning upon arrival in the SRC Mini Canteen Book.

COST: \$2

To encourage healthy eating and provide a valuable service to school families the cost of mini canteen has been subsidised by the school.

Families can pay either daily or in advance (\$10 per student to be supplied with a salad bowl or sandwich 5 days of the week).

PLEASE NOTE:

- Toasties will **not** be available for purchase at all this term.
- There will be no food brought from home (left overs, noodles etc.) heated up / prepared by staff for students due to reduced staffing on Wednesdays. Only salad bar, ice blocks and fruit will be available for purchase.



Weekly Regulars

Ice Blocks	\$1.00
Chocolate Yowie Cups	\$2.00
Sippah Straws	\$1.50
Fruit	\$0.50

High School Tasters

Tamworth High School

Quirindi High School

Year 6 Taster Day Tuesday 3 December

Peel High School

Year 5 Taster Day Wednesday 30 October
Year 6 Treasure Hunt Wednesday 20 November

Farrer Memorial Agricultural High School

Year 7 Orientation Thursday 5 December

Term 4 2019

Week 3

Wednesday 30 October	PHS Year 6 Taster Day
	Small schools NSW Touch Gala Day
Thursday 31st October	Halloween Disco at Dungowan Hall

Week 4

Tuesday 5 November	SRC Melbourne Cup Day
Friday 8 November	CAPERS Matinee and Evening Performance.

Week 5

Tuesday 12 November	Kindy 2020 Orientation 9-3
---------------------	----------------------------

Week 6

Monday 18 November	Mrs Hughes Report Training
Tuesday 19 November	Kindy 2020 Orientation 9-3

**Woolomin Staff
attending**



Please come along to Dungwan PS

HALLOWEEN

Disco

October 31st 6-8PM

At Dungowan Hall

Cost: \$5 incl. entry and BBQ

Costumes Required

RSVP to your School by 28/10/19

Age: Primary students and under

All children must be accompanied by a supervising adult.



SRC MELBOURNE CUP HAT DISPLAY!

Tuesday 5 November 2019 is Australia's iconic horse race, The Melbourne Cup. Woolomin Public School students are invited to wear their most outrageous, flamboyant and colourful hat or fascinator to school for a gold coin donation.



The SRC will also hold a Melbourne Cup themed cake stall. Please race to your kitchens, put your baking caps on to create some colourful treats!

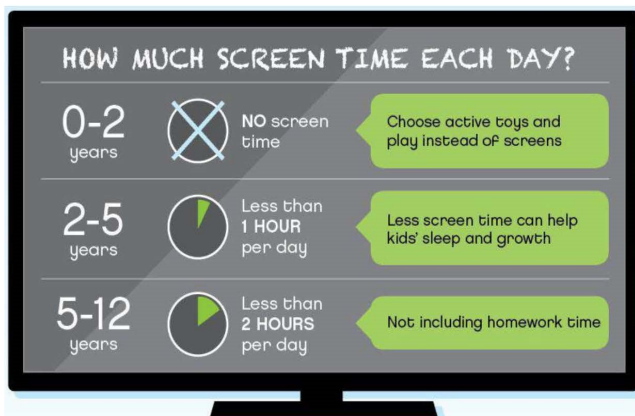
Good for Kids good for life

TURN OFF SCREENS AND GET ACTIVE!

Screens can be great for learning, play and communication, but too much screen time can be unhealthy. Try to sit less and move more.

How can parents help?

- Ensure kids have at least one hour of physical activity a day,
- Limit kids total screen time to less than 2 hours per day,
- Remove TV sets and computers from your child's bedroom,
- Encourage other types of fun that include both physical and social activities, like walking the dog or joining a sports team.



Source: Make Healthy Normal and the 24hour Movement Guidelines



HNELHD-GoodForKids@health.nsw.gov.au
<http://www.goodforkids.nsw.gov.au/>

ART AFTER SCHOOL AT THE GALLERY

8-12yr WEDNESDAYS **5-7yr THURSDAYS**

WWW.TAMWORTHREGIONALGALLERY.COM

SEASONS GREETING

Nundle Lions Twilight Christmas Market

Saturday 16th November 2019
4.30-8pm Stalls...8pm-11pm Entertainment
Nundle Woollen Mill Grounds
Entry \$2, kids under 12 years FREE
Experience an authentic Christmas market!
*German inspired food *Quality handmade products
*Christmas lights and music *Santa *Face painting & more

Bring a Jumper and Picnic Rug and enjoy a great night out

A LIONS CLUB Community Fundraiser

OOSH Services

What do you do when the school day has finished, but your working day hasn't? How do you keep your child busy during the holidays? The answer for many working parents of school aged children is Out of School Hours Care (OOSH).

OOSH is supervised care and recreation for primary school-age children:

Before and after school,

On pupil-free days,

During school holidays (vacation care)

OOSH care is usually associated with schools and caters to primary school children. Most OOSH services are operated by community and private organisations and the government's program is known as Out-side School Hours Care (OSHC) or Vacation Care (VC).

Typical hours for OOSH services are:

Before school commencing from 6:30am till 9:00am

After school 3:00pm till 6:00pm

Vacation from 7:00am till 6:00pm each week day

At the recent P&C meeting there was discussion regarding establishing an OOSH service based at Woolomin PS. The process to establish and coordinate this service is quite involved so the first step is to survey parents to establish the need for this service and the number of potential families who would use this service and the frequency that they would access the service.

Please complete the attached brief survey to indicate your responses to an OOSH service operating at Woolomin PS.

OOSH Survey Response

FAMILY NAME:

Please circle YES or NO to indicate your response

YES / NO Our family would use OOSH at WPS

YES / NO More than 3 times per week

YES / NO About once per week

YES / NO During School Holidays

How many children in your family would use OOSH services? _____

Do you know of any other families who would use OOSH in the local community?

Thank you for your time. Responses help our school provide valuable services.